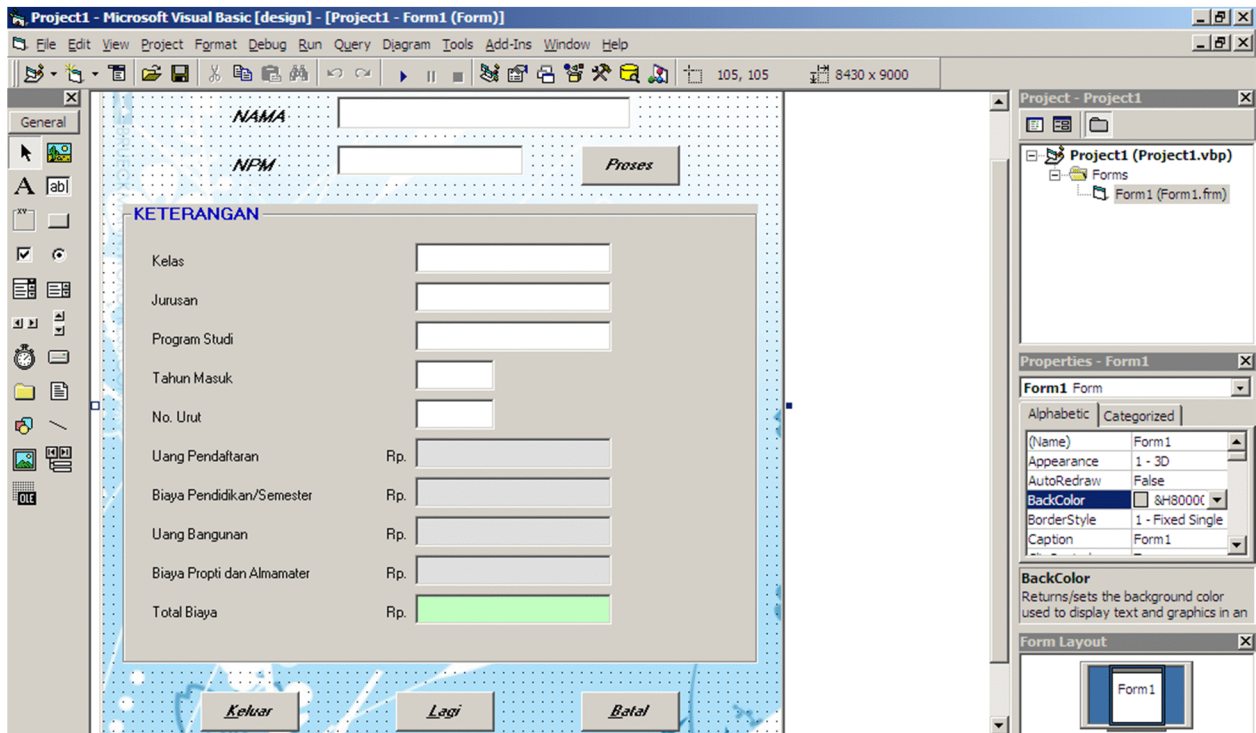


DESAIN



LISTING PROGRAM

```
Microsoft Visual Basic [design] - [Form1 (Code)]
File Edit View Project Format Debug Run Query Diagram Tools Add-Ins Window Help
Ln 45, Col 17
Proses Click
Private Sub batal_Click()
    nama.Text = ""
    npm.Text = ""
    kls.Text = ""
    jur.Text = ""
    prodi.Text = ""
    th.Text = ""
    no.Text = ""
    reg.Text = ""
    pndd.Text = ""
    bang.Text = ""
    propti.Text = ""
    tot.Text = ""
    nama.SetFocus
End Sub

Private Sub keluar_Click()
End
End Sub

Private Sub lagi_Click()
    nama.Text = ""
    npm.Text = ""
    kls.Text = ""
    jur.Text = ""
    prodi.Text = ""
    th.Text = ""
    no.Text = ""
    reg.Text = ""
    pndd.Text = ""
```

```
bang.Text = ""
propti.Text = ""
tot.Text = ""
nama.SetFocus
End Sub
```

```
Private Sub proses_Click()
If nama.Text = "" Then MsgBox ("Masukkan Nama")
Dim a, t, c, k, j, p As String
a = npm.Text
k = Left(a, 1)
j = Mid(a, 5, 1)
p = Mid(a, 6, 2)
t = Mid(a, 3, 2)
c = Right(a, 3)
no.Text = c
If npm.Text <> "" Then
th.Text = "20" + t
Else
MsgBox ("Masukkan NMP Anda")
npm.SetFocus
End If
End If
Select Case j
Case "1"
jur.Text = "Sistem Informasi"
Case "2"
jur.Text = "Manajemen Informatika"
Case "3"
jur.Text = "Manajemen dan Komp. Akuntansi"
End Select
```

```
If k = "E" Or k = "e" Then
Select Case p
Case "01"
kls.Text = "Eksekutif"
prodi.Text = "Strata Satu"
reg.Text = "200000"
pndd.Text = "1900000"
bang.Text = "1250000"
propti.Text = "600000"
Case "02"
kls.Text = "Eksekutif"
prodi.Text = "Diploma Tiga"
reg.Text = "150000"
pndd.Text = "1650000"
bang.Text = "1250000"
propti.Text = "600000"
Case "03"
kls.Text = "Eksekutif"
prodi.Text = "Diploma Satu"
reg.Text = "150000"
pndd.Text = "1350000"
bang.Text = "1250000"
propti.Text = "600000"
End Select

ElseIf k = "R" Or k = "r" Then kls.Text = "Reguler"
Select Case p
Case "01"
kls.Text = "Eksekutif"
prodi.Text = "Strata Satu"
```

```
reg.Text = "200000"
pndd.Text = "1500000"
bang.Text = "1000000"
propti.Text = "600000"
Case "02"
kls.Text = "Eksekutif"
prodi.Text = "Diploma Tiga"
reg.Text = "150000"
pndd.Text = "1250000"
bang.Text = "1000000"
propti.Text = "600000"
Case "03"
kls.Text = "Eksekutif"
prodi.Text = "Diploma Satu"
reg.Text = "150000"
pndd.Text = "1250000"
bang.Text = "1000000"
propti.Text = "600000"
End Select
End If
tot.Text = Str(Val(reg.Text) + Val(pndd.Text) + Val(bang) + Val(propti))
End Sub
```

PREVIEW

Form1

NAMA Markenyos

NPM E-09101197

KETERANGAN

Kelas	Eksekutif
Jurusan	Sistem Informasi
Program Studi	Strata Satu
Tahun Masuk	2009
No. Urut	197
Uang Pendaftaran	Rp. 200000
Biaya Pendidikan/Semester	Rp. 1900000
Uang Bangunan	Rp. 1250000
Biaya Propri dan Almamater	Rp. 600000
Total Biaya	Rp. 3950000